

BMW 5 Series GT 2009 on

Our ref: H0572



REF: 122



REF: 121



REF: 104



Packing requirements

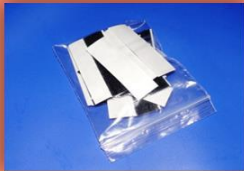
BOOTLINER

- 2 x ref 122 (**long**, part self-adhesive loop fastener tabs) cut length 165mm long
- 5 ref 121 (plastic/fastener tab)
- 10 x ref 104 (**short**, part self-adhesive loop fasteners)
- Minimum of 29 self-adhesive loop fastener tabs

REAR DOOR COVER

- Minimum of 20 self-adhesive loop fastener tabs

VERY IMPORTANT PREPARATION



To ensure a good bond, when using the self-adhesive hook & loop fasteners to attach the Bootliner to the plastic / metal trim (**Not** the carpet); it is most important to remove silicone film from the vehicle trim. Silicone is applied during manufacture and can also be found in many valeting products. It is **highly likely there will be a build-up of silicone**. Before applying any self-adhesive fastener pads, the surface **MUST be thoroughly** cleaned using a silicone remover. (The fasteners cannot be used once it has been in contact with silicone). We recommend "Intensive Tar Remover" made by AutoGlym and available from Halfords. Wipe off thoroughly **any residue with a separate clean dry cloth**. **NOTE:** the adhesive takes 24hrs to reach full adhesion – do not touch during.

PREPARATION

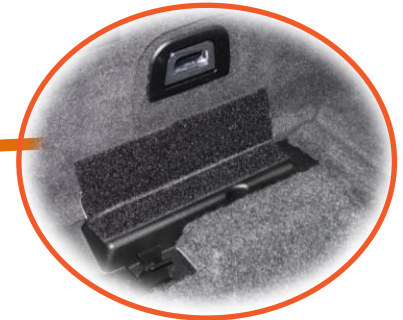
- Remove the parcel shelf. It can be replaced later.



REF: 122 ONLY remove lower section of paper

BASE

- Lift up the False Floor and attach the self-adhesive part of the tab ref 122 to the plastic moulding as shown in the photo. The remaining fastener tab will sit above the false floor when closed. Repeat on opposite side. Close the False Floor.
- Unfold the Hatchbag and place in the vehicle. The panel with the Hatchbag label will sit against the back of the rear seat. Position the base snugly into place. Start behind the rear seats and work backwards.



FRONT

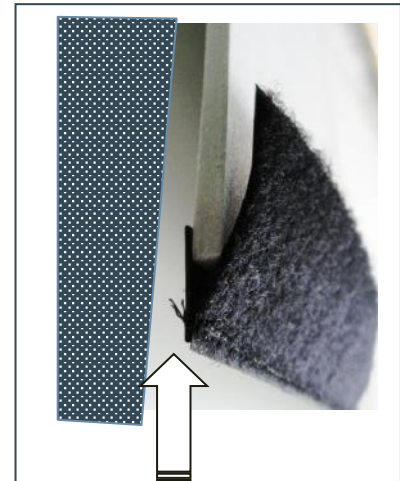
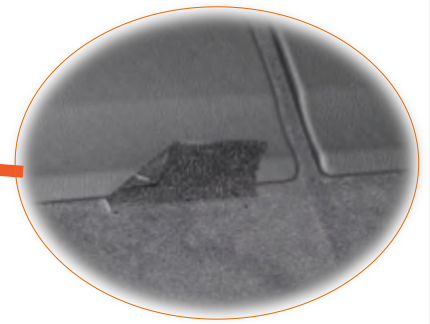
- Pass the front panel of the Boot Liner over the top of the Boot Divider.

*To complete the next step you may find it easier to fold down the rear **seats** and enter the vehicle through the rear passenger doors.*

- Push the plastic section of the 5 x Ref 121's up behind the moulded face. Reposition to align with the fastener welds on the Liner and fasten together.

NOTE: REAR PLUS / SPLIT VERSIONS

- **YOU MUST UNFASTEN THESE HOOK & LOOP TABS BEFORE YOU RECLINE THE REAR SEAT UPPERS / BOOT DIVIDER** (*Please refer to REAR PLUS options on website to see detailed photo*)



Push **PLASTIC** section of tab up behind the moulded face



PLASTIC SIDES VARIATIONS

- These photos show the 2 different plastic moldings we have seen on the 5 Series GT
- Differences to note:
 - Depth of plastic return – see tip of arrow pointing to a DEEP return on the left and a SHALLOW one on the right photo.
 - Light position.
- These instructions attempt to cover the fitting in both models.

PLEASE NOTE: Hook fasteners do not attach to the carpet in this vehicle, so it is necessary to utilise the few suitable areas on this plastic molding.

DEEP RETURN SIDES

- Use the self-adhesive fastener tabs to attach the side panel to the “DEEP” return on the plastic moulding.
- The safety triangle sits behind the nearside panel.

NOTE: REAR PLUS / SPLIT VERSIONS ONLY

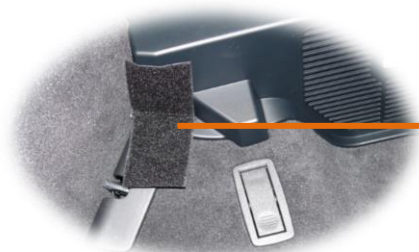
Boot Divider Release Catch Cut Outs

- Before fastening the side, carefully pass the RAW cut edges around and behind the mouldings of the Boot divider release catches.
- Tips on how? See next page*
- When the rear seats are folded you can use the remaining ref 104s to keep the front end of the sides pinned back.
- Two ties are provided to fix the lowered front panel to the chrome d rings.



SHALLOW RETURN SIDES

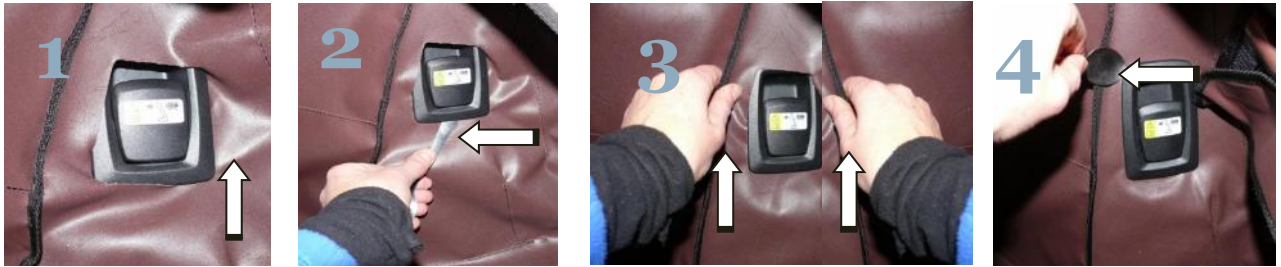
- Place sides snugly into place.
- If you have a Rear Plus / Split version please read the note above first.
- The “shallow return” does not provide sufficient room for the self-adhesive fasteners. We have provided 6 ref 104 fastener tabs to attach to the underside of the plastic moulding.
- The arrows indicate the most suitable areas for these tabs; locate the corresponding hook fastener weld on the reverse face of the liner.
- Fix to the underside, and not just the shallow return.
- The white arrows imply these tabs will need to be trimmed to suit the available plastic.



Ref 104 attached to the under face of the plastic



- The safety triangle sits behind the nearside panel.



HOW TO FIT RAW CUTOUTS

1. Start bottom corner – nearest to the recess. Push the raw edge under the corner of the plastic moulding.
2. Gently pull the opposite bottom corner over. A teaspoon will help you to gently feed the fabric under as you go.
3. Gently pull the liner upwards with both hands: sliding the fabric under the moulding and bringing the top of the cutout closer to the top of the moulding.
4. Repeat with the two top corners, ending with the corner closer to you.

BACK END OF SIDES

- Use the self-adhesive loop fasteners pads to attach the back panel to the tailgate.

BACK

- Use the self-adhesive loop fasteners pads to attach the back panel to the tailgate.



Optional extras

Please note these photos are non specific to your vehicle.

BUMPER FLAP

- Fit Bootliner
- Attach the Bumper Flap to the loop fastener strip that has been manufactured into the base of the boot liner.
- The Bumper Flap either folds into the vehicle OR can be detached and stored elsewhere when you close the tailgate.
- Please note that the edges of the fabric are not bound so that any mud, dirt or water can run off.



TAILGATE COVER

- Use the self-adhesive loop fastener tabs to attach the cover to the plastic trim.