

BMW 3 SERIES TOURING

2005 – 2012

Our ref: H0395

Packing requirements



Bootliner

6 x ref:104

4 x ref: 099

5 own Base tabs

Minimum of 9 self-adhesive loop fastener tabs

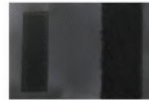
Tailgate cover – not available



REF: 104



REF: 099



BASE TABS

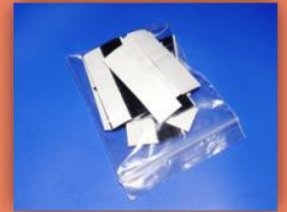


VERY IMPORTANT PREPARATION

To ensure a good bond, when using the self-adhesive hook & loop fasteners to attach the Bootliner to the plastic / metal trim (**Not** the carpet); it is most important to remove silicone film from the vehicle trim. Silicone is applied during manufacture and can also be found in many valeting products. It is **highly likely there will be a build-up of silicone**. Before applying any self-adhesive fastener pads, the surface **MUST be thoroughly** cleaned using a silicone remover. (The fasteners cannot be used once it has been in contact with silicone). We recommend "Intensive Tar Remover" made by AutoGlym and available from Halfords. Wipe off thoroughly **any residue with a separate clean dry cloth**.

Unfortunately we are unable to supply this product, as it cannot be transported via our postal carrier.

NOTE: the adhesive takes 24hrs to reach full adhesion, do not disturb during.



PREPARATION

Remove the load cover cassette: It can be replaced later

Unlock the rear seat back rests and recline a little.

Please note the following photos are non-specific to your car

FITTING

BASE

- Place the liner into the car and fit the base snugly into place.
- Push the two foam tabs down into the void between the rear seat and the boot floor.
- Re-lock the rear seat back rest to trap these tabs.

Please note the photo is non-specific to your vehicle- your tabs will be set further apart



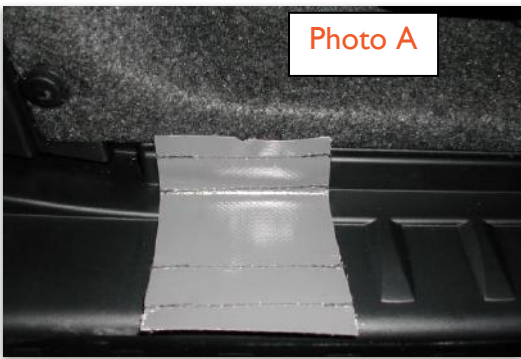


Photo A

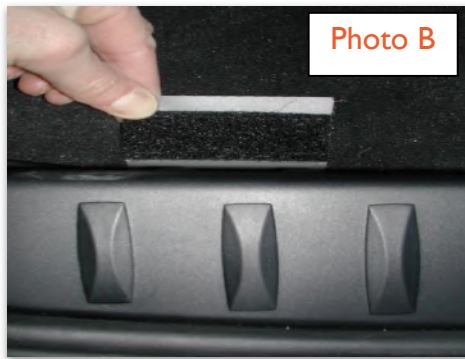


Photo B

BASE cont.

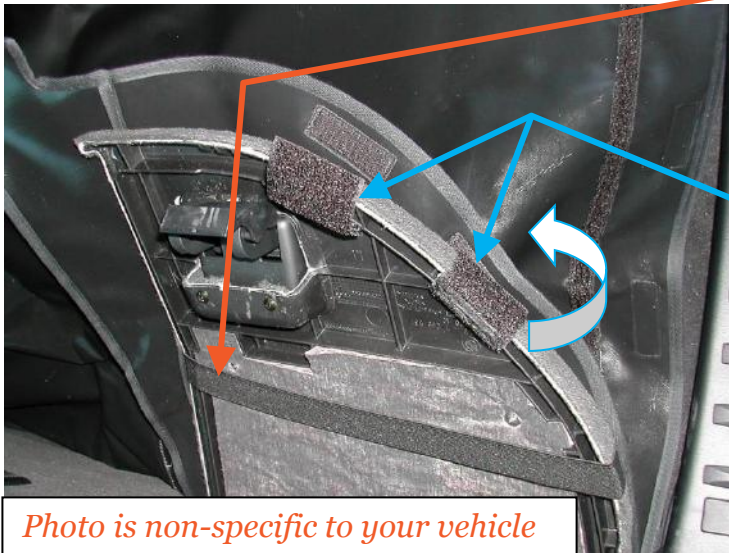
At the tailgate end of the base, locate the five hook fastener welds on the reverse side of the liner. The following tabs are to be aligned with these.

- **Photo A:** Attach the five base tabs to the under floor molding, using the self-adhesive loop fastener tabs. (You will need to lift up the carpeted base panel)
- **Photo B:** These Base tabs will protrude out of the floor panel when replaced, allowing the liner to be fasten to them.

SIDES

Unlock the nearside access panel.

ELASTIC LOOPS

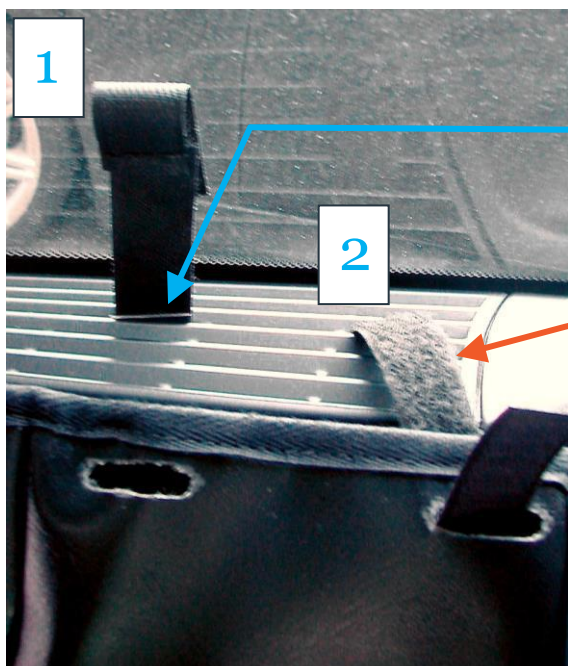


Locate the large elastic loop attached to the reverse e face o f the liner sides. Pass it over the top of the access panel and slide it down

REF: 104's

Attach these large fastener tabs to the reverse face of the access panels, in line with the hook fastener welds on the reverse side of the liner. The section of loop fastener without any self-adhesive will protrude out of the access panel, wrap over the edge and fasten the liner .

Photo is non-specific to your vehicle



FRONT HALF OF THE SIDES

- Locate the slots in the liner sides
- **1.** Push the plastic section of the ref: 099 clip into the Air vent. This photo shows the correct placement: In-line with the liner slots and the fourth row from the liner to the window
- **2.** Place the fasteners this “way-up”!
- **3.** Pass the fastener through the liner slot and fasten.

Please note the following photos are non-specific to your car



1



2



3

SIDES *cont.*

Use the self adhesive loop fastener tabs to attach the liner to the plastic molding where the load cover cassette is normally located.

OFFSIDE PANEL

- Collapse the net.
- Position the Rear side of the panel snugly into place.
- Repeat from “FRONT HALF OF THE SIDES”



Please note these photos are non-specific to your car.

SEAT FLAP

- The Seat flap is designed to protect the top of your rear seat giving additional protection from drooling dogs etc.
- The Seat Flap can also be used in conjunction with the Rear Plus Option(s). With the rear seats in the folded position the Seat Flap extends the coverage over any exposed section of the seat backs and the headrests
- Attach the Seat Flap to the loop fastener strip that has been manufactured into the Boot Liner just below the top of the rear seats.
- The flap is then placed over the rear head rests and down the back of the passenger seats.
- If the Seat Flap sits over large headrests and obstructs your rear view: carefully create openings in the flap to accommodate the headrest posts



BUMPER FLAP

- Fit Bootliner
- Attach the Bumper Flap to the loop fastener strip that has been manufactured into the base of the boot liner.
- The Bumper Flap either folds into the vehicle OR can be detached and stored elsewhere when you close the tailgate.
- Please note that the edges of the fabric are not bound so that any mud, dirt or water can run off.

