

Boot Liners

BMW X3 2004 - 2011

Our ref: H0398

Packing Requirements:

- Boot Liner
- 3 x ref: 104 large loop fastener pads
- 4 x loop + hook own fastener grey pads
- Pack of self-adhesive fastener tabs (min x 15 pcs)



VERY IMPORTANT PREPARATION

To ensure a good bond, when using the self-adhesive hook & loop fastener to attach the Bootliner to the plastic / metal trim (**Not** the carpet); it is most important to remove silicone film from the vehicle trim. Silicone is applied during manufacture and can also be found in many valeting products. It is **highly likely there will be a build-up of silicone**. Before applying any self-adhesive fastener pads, the surface **MUST be thoroughly** cleaned using a silicone remover. (The fasteners cannot be used once it has been in contact with silicone). We recommend "Intensive Tar Remover" made by AutoGlym and available from Halfords. Wipe off thoroughly **any residue with a separate clean dry cloth**.

Unfortunately we are unable to supply this product, as it cannot be transported via our postal carrier.

NOTE: the adhesive takes 24hrs to reach full adhesion, do not disturb during.



PREPARATION

- Remove load space cover cassette
- Unlock the rear seat uppers and fold forward a little.

BASE

- Position base of the liner snugly into place.
- At the seat end of base locate the two foam filled tabs and push them down into the void between the floor and the seat uppers. Lock the rear seat uppers trapping in the foam tabs. *See photo 'A' (Please note this photo is non specific to your vehicle - your tabs will be set further apart)*
- At tailgate end of base: Locate the four hook fastener welds on the reverse side of the liner. Attach the four grey fastener tabs (supplied separately) to the floors inner moulding, in line with the liner's fastener welds. Use the self-adhesive loop fastener pads (supplied separately): *see photo B*. The tabs will protrude out of the floor panel when its replaced allowing the liner to be fasten to them: *see photo C*.



Photo A

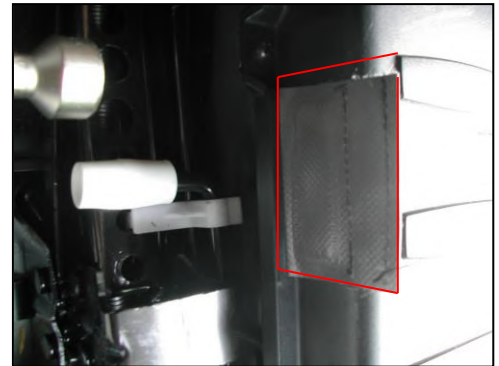


Photo B

FRONT PANEL

- Pass the hook & loop fastener straps around the headrest posts and fasten to the liner.
- Use self-adhesive fastener pads to attach the two fastener welds to the relevant plastic panel.



Photo C

SIDES

- Unlock the Nearside and offside access panels. Use the recessed button shown in *see photo D*.



Photo D



ELASTIC LOOPS

Locate the large elastic loops attached to the reverse face of the liner sides. Pass them over the top of the access panels and slide down.



LARGE FASTENER TABS

Attach the large fastener tabs (supplied separately) to the reverse side of the access panels, inline with the hook fastener welds on the wrong side of the liner. The section of fastener without adhesive will protrude out of the access panel.

See Photo E

PLEASE NOTE: The offside tab will require cutting so that it can sit comfortably over the plastic moulding. See photo F and G

Photo E

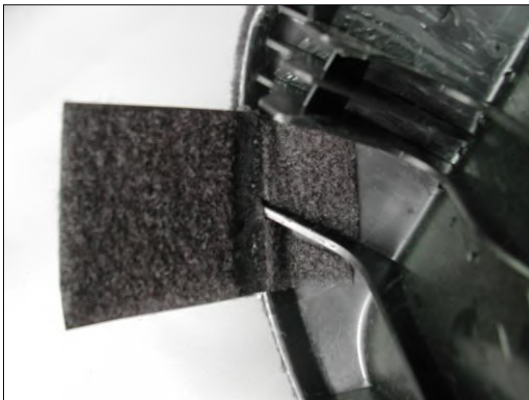


Photo F



Photo G



The liner can be fastened to these protruding tabs.

FRONT HALF OF SIDES

- Use the smaller self-adhesive loop fastener tabs (supplied seperately) to attach the liner to the plastic moulding. See photo.



ADDITIONAL SEAT FLAP

Photo below shows a liner with the additional seat flap attached.