

## Volvo V60 Sports Wagon 2010 - 2018

### Load Safety net fixed to the back of the rear seats

Our Ref: H0533-SNIN

#### PACKING REQUIREMENTS

##### BOOTLINER

- 4 x ref: 107 ("J" profile plastic + loop fastener)
- 2 x ref: 124 (hook + loop fastener @150mm long)
- 2 x ref: 131 Cut @ 60mm wide
- 2 m length of 30mm wide self-adhesive loop fastener
- 3 of large foam filled/loop fastener tabs



REF: 107



REF: 124



REF: 131



#### PLEASE NOTE: accessory "NET POCKETS".

- The Boot Liner does NOT accommodate these two net pockets in the load compartment.

Please phone to discuss this option before placing your order.



#### VERY IMPORTANT PREPARATION

To ensure a good bond, when using the self-adhesive hook & loop fasteners to attach the Bootliner to the plastic / metal trim (**Not** the carpet); it is most important to remove silicone film from the vehicle trim. Silicone is applied during manufacture and can also be found in many valeting products. It is **highly likely there will be a build-up of silicone**. Before applying any hook & loop fasteners pads, the surface **MUST be thoroughly** cleaned using a silicone remover. (The hook & loop fasteners cannot be used once it has been in contact with silicone). We recommend "Intensive Tar Remover" made by AutoGlym and available from Halfords. Wipe off thoroughly **any residue with a separate clean dry cloth**.

**NOTE:** the adhesive takes 24hrs to reach full adhesion – do not disturb during.



#### PREPARATION

- Remove the load cover. It may be replaced later.
- Ensure the "Load Safety Net" is attached to the Rear Seat Backs
- Unfold the Hatchbag and place in the vehicle so that the base fits snugly in position. The panel with the Hatchbag label sits against the back of the rear seat.



## FITTING

- Place the liner into the car and fit the base snugly into place.

## BASE

### Photo A+ B

Locate the two hook fastener strips on the reverse side of the liner at the tailgate end.

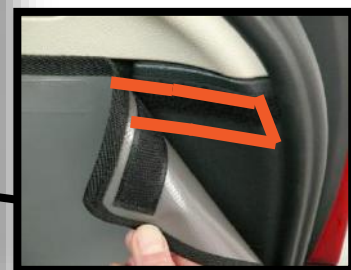
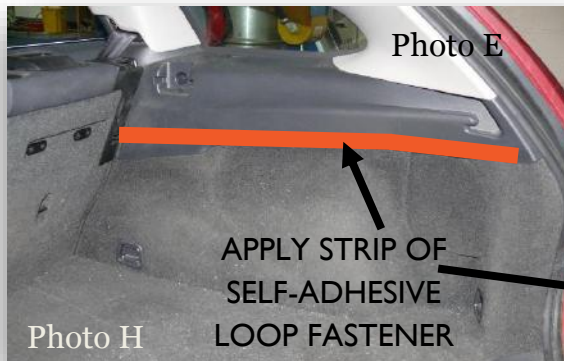
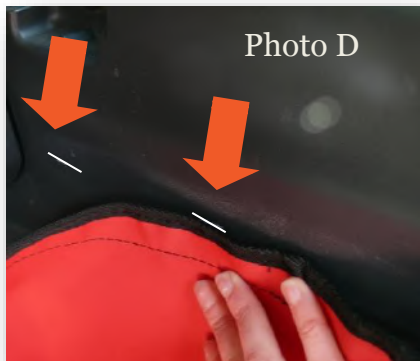
- Photo A:**  
Lift up the false floor. Attach the two ref: 124 hook / loop fastener tabs to the floor's carpet. The hook fastener section will attach directly to the carpet.

- Photo B:**  
The tabs will protrude out of the floor panel when its replaced allowing the liner to be fasten closed to them.

(Please note this is non-specific to your car)

### Photo C

- Push the two foam tabs down into the void between the rear seat and the boot floor.



## SIDES

### Photo D + E

- Place the side panels' snugly into place.
- Chalk the height of the liner sides onto the plastic trim: Use this as a guideline to complete the next step.
- Use the cut length self-adhesive loop fastener to attach the side panels to the plastic trim above the carpet.

### Photo F + G

- Attach the self-adhesive section of the ref: tab 131 to the under face of the outer most corners of the tailgate plate. The exposed loop fastener will fix to the hook fastener welds.

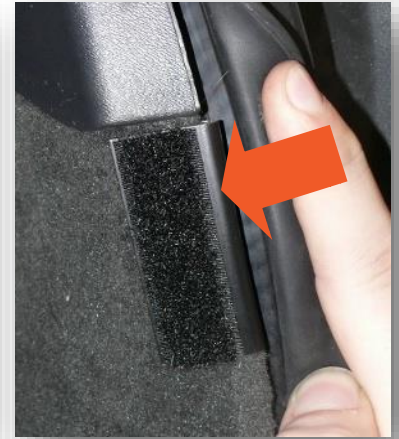
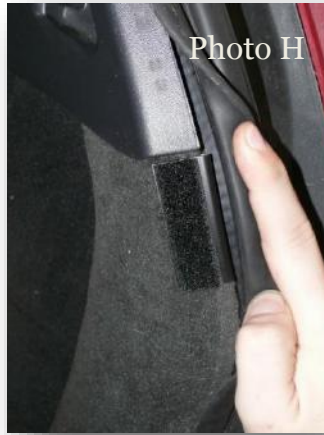




## SIDES CONTINUED

### Photo H

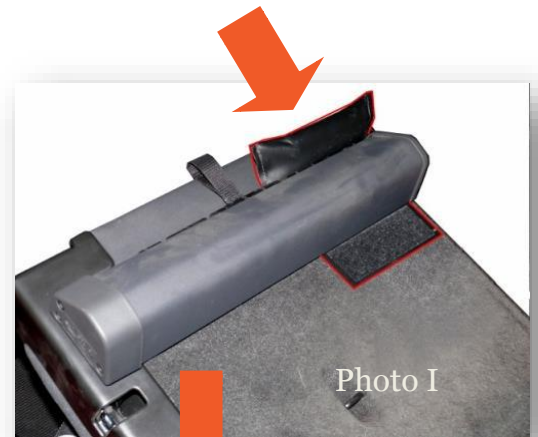
- Pull back the rubber seal and slide the curved part of the clip (ref. 107) behind the carpeted panel. The loop fastener section will remain exposed.
- Re-align with the hook fastener welds on the liner and fasten.



## FRONT

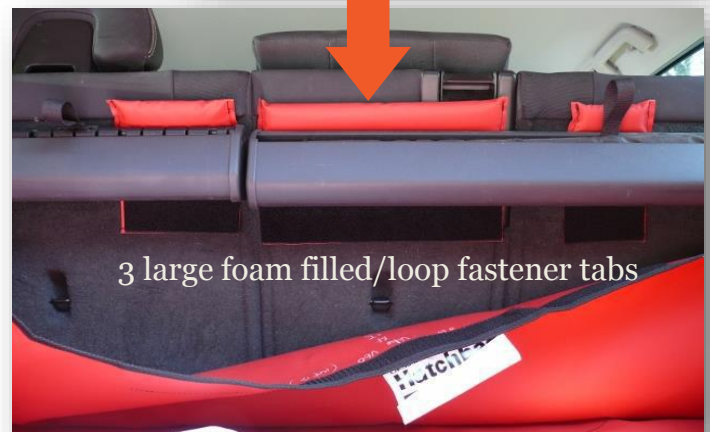
### Photo I

- Familiarize yourself with the positioning of the hook fastener stitched to the reverse face of the front panel.
- Pass the loop fastener ends of the separate large foam filled/loop fastener tabs down into the void behind the load cover cassette and the rear seat upper.
- The largest of the 3 sits in the middle, and the smallest goes through the offside gap.
- The loop fastener should now be visible below the net cassette.
- Position to correspond with the hook fastener.



### Photo J

- Re-lock the rear seat uppers, trapping the 2 base foam tabs securely. (Referred to in photo C)
- The load cover may dislodge the front end of the sides: it is necessary to feed the fabric behind the ends.
- Attach the front panel to the foam filled loop fastener tabs. (Referred to in photo D)



## REAR PLUS VERSIONS

- **YOU MUST UNFASTEN THESE TABS BEFORE YOU RECLINE THE REAR SEAT UPPERS**

(Please refer to REAR PLUS options on website to see detailed photos)



# Optional extras

*Please note the following photos are non-specific to your vehicle*



## BUMPER FLAP

- Fit Bootliner
- Attach the Bumper Flap to the loop fastener strip that has been manufactured into the base of the boot liner.
- The Bumper Flap either folds into the vehicle OR can be detached and stored elsewhere when you close the tailgate.



Exposed seat back

## SEAT FLAP

- The Seat Flap is to be used in conjunction with the **Rear Plus** Option(s). With the rear seats in the folded position the Seat Flap extends the coverage over any exposed section of the seat backs and the headrests
- Attach the Seat Flap to the loop fastener strip that has been manufactured into the Boot Liner just below the top of the rear seats.



SEAT FLAP

## FLOOR EXTENSION

The "Floor extension" offers superior protection to the rear seats when purchased in conjunction with a REAR PLUS option.

- The **Floor extension** is designed to attach to a Rear Plus version liner.
- It offers additional protection to the back of the front seats and the extended floor area when the rear seats are folded flat.

The max width is 148cm (see photo on left).

It will offer no protection to the rear doors



Max Width

PLEASE REQUEST FURTHER INFORMATION  
AS YOU PLACE YOUR ORDER

*(These items cannot be added at a late date)*