

## VAUXHALL ADAM 2012 onwards

Our ref: H0598

### Packing Requirements

- BOOT LINER**  
Minimum of 5 self-adhesive loop fastener tabs  
1100mm cut length of 30mm wide self-adhesive loop fastener
- TAILGATE COVER**  
Minimum of 17 self-adhesive loop fastener tabs



*Photo shows a Rear Split and additional seat Flap*

### MODEL VARIATIONS

- Please ensure you have REMOVED the False Floor.

### VERY IMPORTANT PREPARATION

To ensure a good bond, when using the self-adhesive hook & loop fastener to attach the Boot liner to the plastic trim (**Not** the carpet); it is most important to remove silicone film from the vehicle trim. Silicone is applied during manufacture and can also be found in many valeting products. It is **highly likely there will be a build-up of silicone**. Before applying any Hook & loop fastener pads, the surface **MUST be thoroughly** cleaned using a silicone remover. (The Hook & loop fastener cannot be used once it has been in contact with silicone). We recommend "Intensive Tar Remover" made by AutoGlym and available from Halfords. Wipe off thoroughly **any residue with a separate clean dry cloth**.

**NOTE:** the adhesive takes 24hrs to reach full adhesion – do not touch during.

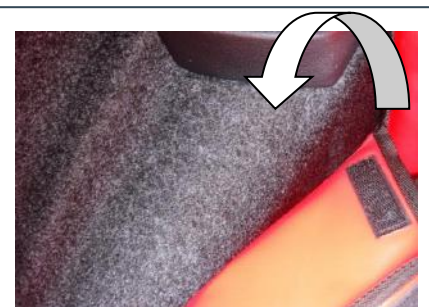


### PREPARATION

- Remove the load cover. It may be replaced later.
- Unfold the boot liner and place in the vehicle. The panel with the Hatchbag label sits against the back of the rear seat.

### BASE

- Position the base of the boot liner snugly into place.
- Start at the tailgate end and work forwards.
- The hook fastener welded to the reverse face of the base will attach directly to the carpet.



## FITTING FRONT

- Pass the hook & loop fastener straps around each corresponding post and fasten back onto itself.

## REAR PLUS VERSIONS

- **YOU MUST UNFASTEN THE HOOK & LOOP FASTENER / HEADREST STRAPS BEFORE YOU RECLINE THE REAR SEAT UPPERS**



## BACK

- Position the back panel snugly into place.
- Where the two long strips of hook fastener have been sewn – cut to length from the long length of self-adhesive loop fastener to attach it to the plastic tailgate plate.

**TIP**  
*Peel back the rubber seal to trap the edge underneath, and do not fix to the ridged area.*



## SIDE

- Position the sides of the Boot liner snugly into place so that you can identify where to attach the self-adhesive loop fastener:

Long length cut to suit

Short loop fastener tabs

### TIP

*1: Ideally wrap a small amount of loop fastener around the front of the side face: see A*

*2: And peel back the rubber seal to trap the cut end underneath: see B*



## REAR PLUS VERSIONS

- Before reclining the rear seats please follow the following advice:

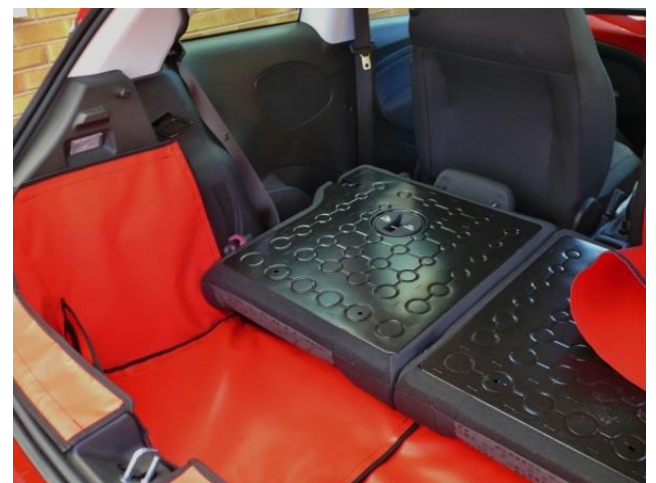
1. Unfasten the hook & loop fastener headrest straps
2. Unfasten the hook & loop fastener seams



3. Lay the front panel flat onto the floor
4. Push the hook fastener edge behind the rear seats as you fold the rear seat flat



5. Neatly reposition the front panel
6. Note: A Seat Flap extends the coverage over the folded seats: see next page



# OPTIONAL EXTRAS

*Please some of these photos are non-specific to your car.*

## SEAT FLAP

- The Seat flap is designed to protect the top of your rear seat giving additional protection from drooling dogs etc.
- The Seat Flap can also be used in conjunction with the Rear Plus / Split options. With the rear seats in the folded position the Seat Flap extends the coverage over any exposed section of the seat backs and the headrests
- Lower the headrests
- Attach the Seat Flap to the loop fastener strip that has been manufactured into the Boot Liner just below the top of the rear seats.
- The flap is then placed over the rear head rests and down the back of the passenger seats.
- If the Seat Flap sits over large headrests and obstructs your rear view: carefully create openings in the flap to accommodate the headrest posts



## BUMPER FLAP

- Fit Boot liner
- Attach the Bumper Flap to the Loop fastener strip that has been manufactured into the base of the boot liner.
- The Bumper Flap either folds into the vehicle OR can be detached and stored elsewhere when you close the tailgate.



## TAILGATE COVER

- Use the self-adhesive loop fastener tabs to attach the cover to the plastic trim.

