

MERCEDES C-CLASS HYBRID PLUG-IN ESTATE- 2014 to 2021

NO OFFSIDE + NEARSIDE RECESSES + RAISED FLOOR

Our ref: Ho6o7 PLUG IN

PACKAGING REQUIREMENTS.

BOOTLINER

- 4x Ref:121
- 1200mm 30mm wide self-adhesive loop fastener
- 1000mm 20mm wide self-adhesive loop fastener

REAR DOOR COVER

- 17x tabs self-adhesive loop fastener



Bootliner photo coming soon



REF: 121



VERY IMPORTANT PREPARATION

To ensure a good bond, when using the self-adhesive hook & loop fastener to attach the cover to the plastic trim it is most important to remove silicone film from the vehicle trim. Silicone is applied during manufacture and can also be found in many valeting products. It is **highly likely there will be a build-up of silicone**. Before applying any self-adhesive fastener pads, the surface **MUST be thoroughly** cleaned using a silicone remover. (The fasteners cannot be used once it has been in contact with silicone). We recommend "Intensive Tar Remover" made by AutoGlym and available from Halfords. Wipe off thoroughly **any residue with a separate clean dry cloth**.

NOTE: the adhesive takes 24hrs to reach full adhesion – do not touch during.



STEP 1. PREPARATIONS

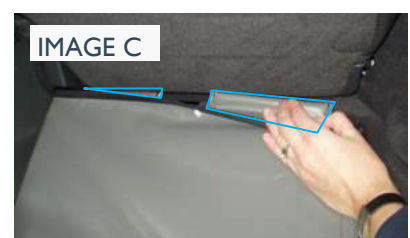
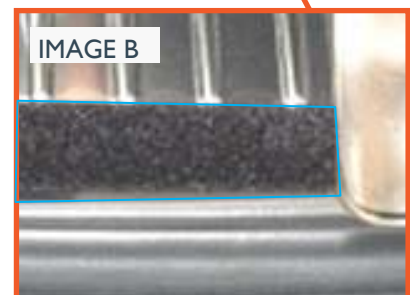
- Remove the load cover. It may be replaced later.
- Remove any additional carpet / rubber mats.
- Unlock the rear seat back rests and recline.
- Unfold the Hatchbag and place in the vehicle. The panel with the Hatchbag label sits against the back of the rear seat.

Please note not all of the photographs are specific to your vehicle

STEP 2. FITTING BASE

- Position the base of the Bootliner snugly into place.
- Start at the tailgate end.
- Cut to length and use the 20mm wide self-adhesive loop fasteners to attach to the tailgate plate.
(image A+B)
- Front end: Push the two foam filled tabs down into the void between the rear seat and the boot floor.
(image C)
- Re-lock the rear seat back rest to trap these tabs.

Please ensure you position the base centrally: ensure you do not drag it to one side before trapping the foam tabs.



STEP 3. FITTING THE FRONT

- Pass the hook & loop fastener straps around each corresponding post and fasten back onto itself.
(image D)

REAR PLUS VERSIONS

You MUST unfasten the hook & loop fastener + the headrest straps before you recline the rear seat uppers.
(*Please refer to REAR PLUS options on website to see detailed photo*)



STEP 4. FITTING THE SIDES

- Cut to length and attach the 30mm wide self-adhesive loop fastener to the plastic trim just above the carpet on both sides of the boot. (image E)
- Position the side panel snugly into place.
- You can fold in the end corners of the fasteners (image F)
- The top edge of the loop fastener is designed to be exposed a little once the liner is attached. (image G)

REF: 121 clips

- At the tailgates end: Pull back the rubber seal and slide the plastic part of the clip (ref. 121) behind the carpeted panel. The loop fastener section will remain exposed. (image H+I)
- Re-align with the hook fastener welds on the liner and fasten.

Rear Plus / Split versions

- *The two ties at the front of the sides fasten to the rear seat locking "D" rings.*

Only use when you have folded flat the corresponding seat: fasten loosely.

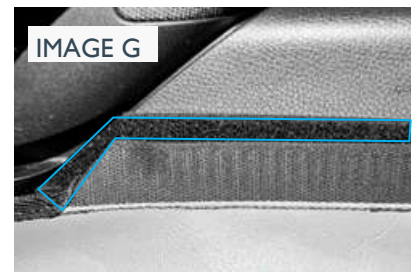
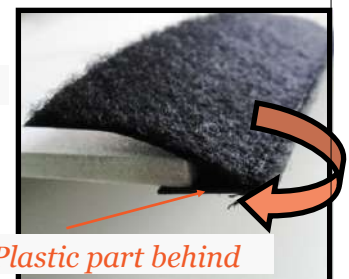


IMAGE I

Pull back rubber seal



Plastic part behind



Please note the following photos are non-specific to your vehicle

OPTIONAL EXTRAS

Please note the following photos are non-specific to your vehicle

STEP 5A. SEAT FLAP

- The Seat flap is designed to protect the top of your rear seat giving additional protection from drooling dogs etc.
- The Seat Flap can also be used in conjunction with the **Rear Plus** Option(s). With the rear seats in the folded position the Seat Flap extends the coverage over any exposed section of the seat backs and the headrests
- Lower the headrests
- Attach the Seat Flap to the loop fastener strip that has been manufactured into the Boot Liner just below the top of the rear seats. (image 1)
- The flap is then placed over the rear head rests and down the back of the passenger seats. (image 2)
- If the Seat Flap sits over large headrests and obstructs your rear view: carefully create openings in the flap to accommodate the headrest posts.



STEP 5B. TAILGATE COVER

- Line up the tailgate cover with the tailgate and clean the areas where the self-adhesive loop fastener tabs will be stuck. (image 4)



Use the self-adhesive loop fastener tabs to attach the cover to the plastic trim.

STEP 5C. BUMPER FLAP

- Fit Boot liner
- Attach the Bumper Flap to the loop fastener strip that has been manufactured into the base of the boot liner.
- The Bumper Flap is one standard length for all models. Trim the length to suit your requirements. Ensure you do not cut through the stitching
- The Bumper Flap either folds into the vehicle OR can be detached and stored elsewhere when you close the tailgate.
- Please note that the edges of the fabric are not bound so that any mud, dirt or water can run off.

OPTIONAL EXTRAS page 2

Please note the following photos are non-specific to your vehicle

STEP 5D. FLOOR EXTENSION

The “Floor extension” offers superior protection to the rear seats when purchased in conjunction with a REAR PLUS option.

- The Floor extension is designed to attach to a Rear Plus version liner.
- It offers additional protection to the back of the front seats and the extended floor area when the rear seats are folded flat.
- The max width is 148cm (see photo on left).
- It will offer no protection to the rear doors

PLEASE REQUEST FURTHER INFORMATION AS YOU PLACE YOUR ORDER (*The Seat Flap 5A, The Bumper Flap 5C & The Floor Extension 5D cannot be added at a late date*)

