

MITSUBISHI OUTLANDER

7 SEAT VERSION (3RD ROW SEATS NOT USEABLE)

2012on Our ref: Ho6o8 -7SEAT

Packing requirements

- BOOTLINER
1500mm cut length of 30mm wide self-adhesive loop fastener
250mm cut length of 20mm wide self-adhesive loop fastener
Minimum of 14 self-adhesive loop fastener tabs
- REAR DOOR COVER
Minimum of 17 self-adhesive loop fastener tabs



PREPARATION

Please ensure that the rear seat backs are positioned UPRIGHT to suit the liner



RECLINED

The Bootliner does **NOT** accommodate the rear seat uppers reclined into the boot area



UPRIGHT

The rear seat uppers must be set at the **MOST UPRIGHT** position

Remove the load cover. It may be replaced later. Please note: *The load cover cannot be stored under the false floor in the boot with the Bootliner inserted.*


VERY IMPORTANT PREPARATION

To ensure a good bond, when using the self-adhesive hook & loop fasteners to attach the cover to the plastic trim it is most important to remove silicone film from the vehicle trim. Silicone is applied during manufacture and can also be found in many valeting products. It is **highly likely there will be a build-up of silicone**. Before applying any self-adhesive fastener pads, the surface **MUST be thoroughly cleaned** using a silicone remover. (The fasteners cannot be used once it has been in contact with silicone). We recommend "Intensive Tar Remover" made by AutoGlym and available from Halfords. Wipe off thoroughly **any residue with a separate clean dry cloth**.

NOTE: the adhesive takes 24hrs to reach full adhesion – do not touch during.



SIDES PREPARATION

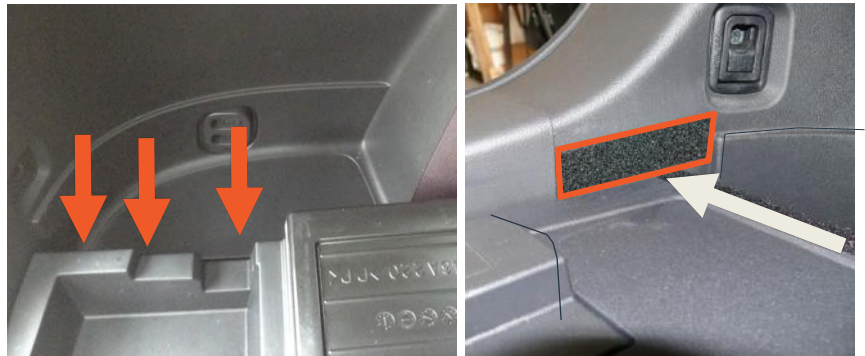
- Attach 30mm wide self adhesive loop fastener as indicate by the orange highlights 
- Fold the false floor to expose the under floor storage
- Attach 20mm wide self adhesive loop fastener tabs as indicated by the orange arrows



*Continue to the fastener behind the seat
belt*




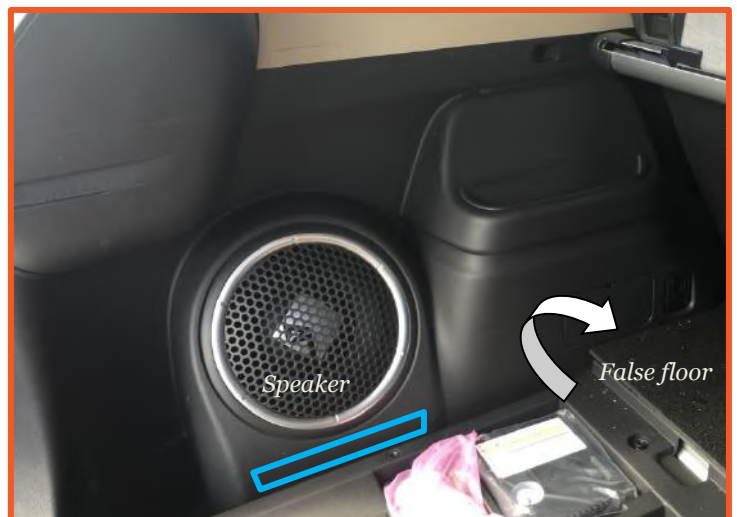
*Continue to the fastener behind the seat
belt*



Under floor storage unit exposed

NEARSIDE - **SPEAKER VERSIONS ONLY**

- Follow the previous steps and then....
- attach 20mm wide self adhesive loop fastener as indicated by the blue highlights 



Under floor storage unit

SIDES

- Unfold the false floor
- Loosely place the Bootliner into the boot with the tailgate end of the base folded over.



- Begin to place the side panels snugly into position – *But just fasten along to the top edges.*



- Keeping the base still folded, position the under section of the base snugly into place: The hook fasteners welded to the reverse face will attach directly to the carpet.



FRONT

Pass the hook & loop fastener straps around each corresponding headrest post and fasten back onto itself.

REAR PLUS VERSIONS

Please note in future: YOU MUST UNFASTEN THE HOOK & LOOP FASTENERS / HEADREST STRAPS WHEN YOU CHOOSE TO RECLINE THE REAR SEAT UPPERS



Please note photo is non-specific to your car.

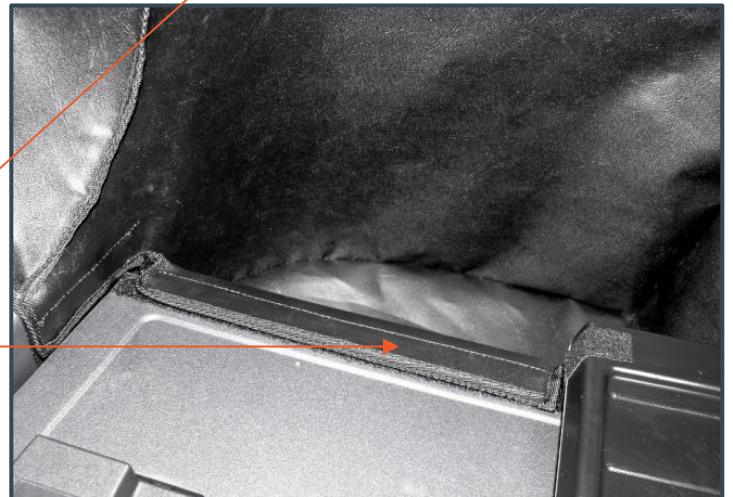
SIDES continued...

- Unfold the base: the fasteners sewn/ welded to the reverse face will attach directly to the carpet.

Please note photo shows a Bootliner with additional fasteners sewn on the base and the front panel in preparation for a Bumper flap and Bootliner Extension



- **BASE** : carefully lift up the false floor and base panel with it.
- Use the self-adhesive loop fastener pads to attach the tailgate end of the sides.
- Position the pocket area snugly into place and fasten close to the fastener strips.
- Unfold the floor



SEATBELT COVERS

The Mitsubishi Outlander has seatbelt covers for the 3rd row seats. Simply wrap the rectangular panel around the seatbelt and fasten.



Please note these photos are non-specific to your car.

SEAT FLAP

- The Seat flap is designed to protect the top of your rear seat giving additional protection from drooling dogs etc.
- The Seat Flap can also be used in conjunction with the Rear Plus / Split options. With the rear seats in the folded position the Seat Flap extends the coverage over any exposed section of the seat backs and the headrests
- Lower the headrests
- Attach the Seat Flap to the loop fastener strip that has been manufactured into the Boot Liner just below the top of the rear seats.
- The flap is then placed over the rear head rests and down the back of the passenger seats.
- If the Seat Flap sits over large headrests and obstructs your rear view: carefully create openings in the flap to accommodate the headrest posts



BUMPER FLAP

- Fit Bootliner
- Attach the Bumper Flap to the loop fastener strip that has been manufactured into the base of the boot liner.
- The Bumper Flap either folds into the vehicle OR can be detached and stored elsewhere when you close the tailgate.
- Please note that the edges of the fabric are not bound so that any mud, dirt or water can run off.



TAILGATE COVER

- Use the self-adhesive loop fastener tabs to attach the cover to the plastic trim.

