

MAZDA CX3 - 2015 on

Our ref: H0631

3 FLOOR LEVELS AVAILABLE FOR THE CX3

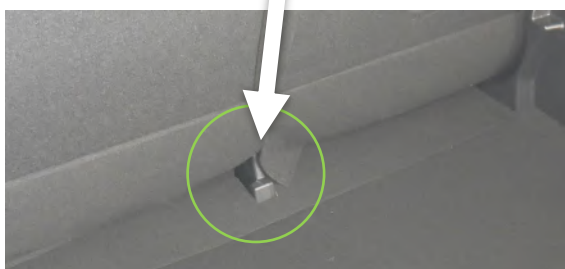
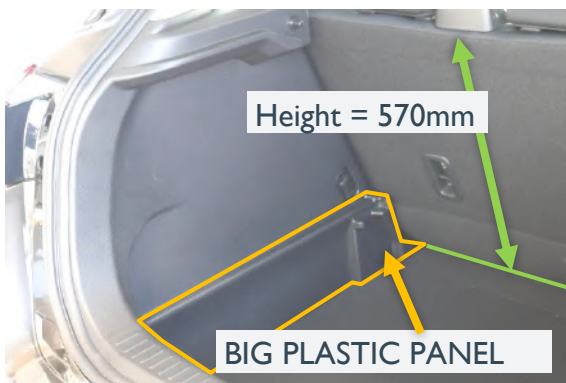
Please read the guide below to chose the correct option.

LOW

H0631-FLOW

DEEP BOOT - TYPE 1

FALSE FLOOR WILL HAVE TO BE REMOVED FROM THE CAR

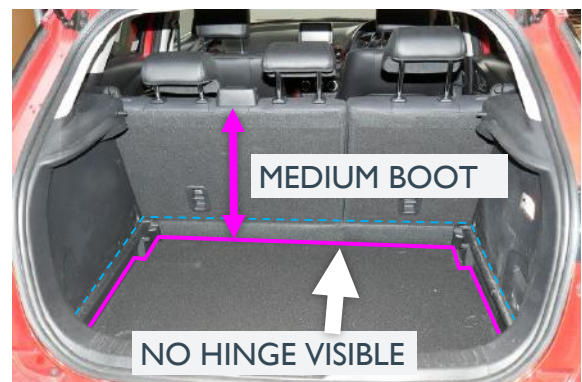
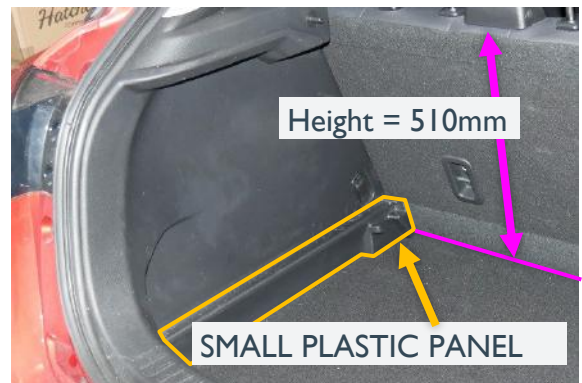


MID

H0631-FMID

DEEP BOOT - TYPE 2

FALSE FLOOR WILL HAVE TO BE REMOVED FROM THE CAR



3RD BOOTH SHAPE
ON NEXT PAGE

MAZDA CX3 - 2015 on

Our ref: H0631

3 FLOOR LEVELS AVAILABLE FOR THE CX3

Please read the guide below to chose the correct option.

RAISED

H0631-FRSD

SHALLOW BOOT

FALSE FLOOR WILL HAVE TO BE
INSERTED AT THE HIGHEST LEVEL

