

Seat Ateca - 2016 on

Our ref: H0654

Question 1 - Floor identification

H0654-FNO-FRSD

AVAILABLE 

No false floor -
Raised

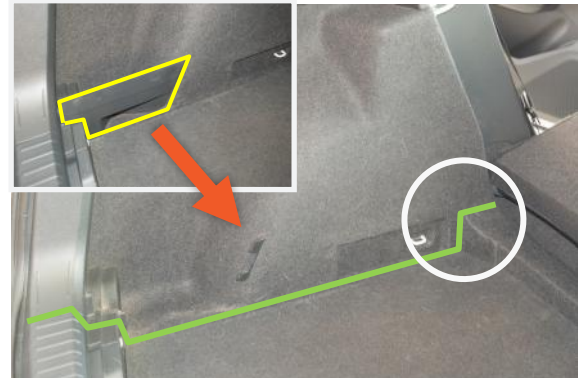


- Floor cannot be lowered
- Has a **shallow** floor
- No hinge visible at bottom of seats
- No plastic panels in **BOTH** recesses

H0654-FNO-FLOW

AVAILABLE 

No false floor -
Low



- Floor cannot be elevated
- Has a **deep** floor
- Hinge is visible at bottom of seats (blue highlight)
- With removable plastic panels in **NEARSIDE** recesses (yellow)



NEXT PAGE - 2 MORE FLOOR VERSIONS



Seat Ateca – 2016 on

Our ref: H0654

Question 1 – Floor identification – Continued

H0654-FIN-FRSD

AVAILABLE ✓

With false floor –
Raised



- Floor is **adjustable**—set in highest position
- Flat base
- Floor panel has handle (blue highlight)
- Has removable plastic panels in **BOTH** recesses (yellow)

H0654-FIN-FLOW

AVAILABLE ✓

With false floor –
Lowered



- Floor is **adjustable**—set in lowest position
- Floor panel has handle (blue)
- Plastic mounts visible on each side (white highlights)
- Angled base (orange highlight)
- Has removable plastic panels in **BOTH** recesses (yellow)



PLASTIC PANEL GUIDE



Seat Ateca - 2016 on

Our ref: H0654

Plastic Panels

The boot liner is designed to expose the plastic panel and accommodating the removal*. This allows the following:

**this is only applicable to the variations that have plastic panels or plastic panel mounts.*

1. The plastic panels can be removed to create a wider load area.
2. Allowing the boot liner to fit, if the plastic panels have been lost.
3. Allowing the boot liner to fit, if your version does not have a plastic panel option

Please Note:

If the plastic panel has been removed, an area of the boot will be exposed through the gap in the boot liner. (orange highlight)

