

## Mini Countryman - 2017 to 2024

Our ref: H0656-HYNO

### Vehicle Identification Guide



**HYNO**

**Non Hybrid version**

This boot liner is suitable for your vehicle.  
Please continue with your purchase.



**HY**

**Hybrid version**

This boot liner **is not** suitable for your  
vehicle. Please select the appropriate  
model from the list.



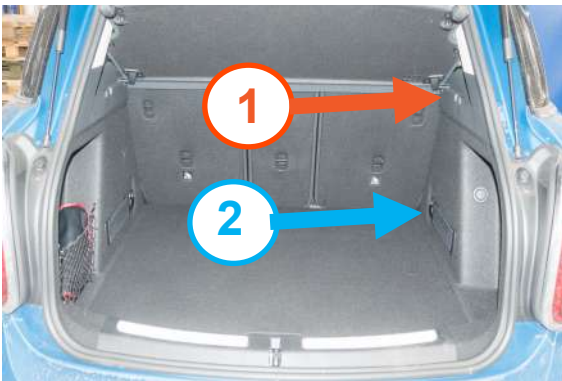
Next page



Question 1 - Vehicle Identification Guide

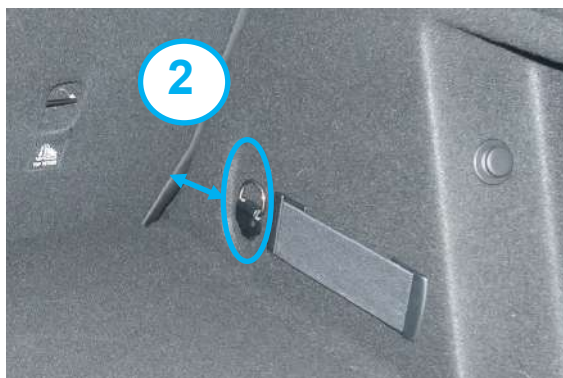
✔ SH1  
AVAILABLE

Boot shape 1



Large gap

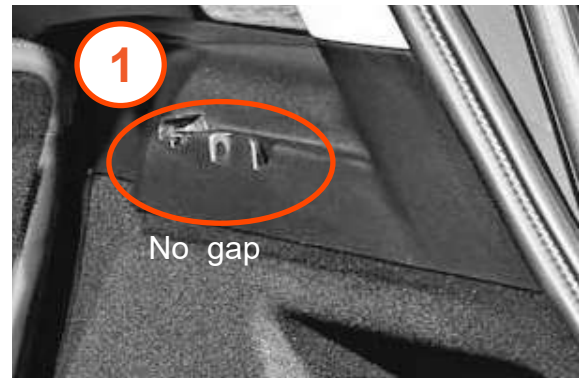
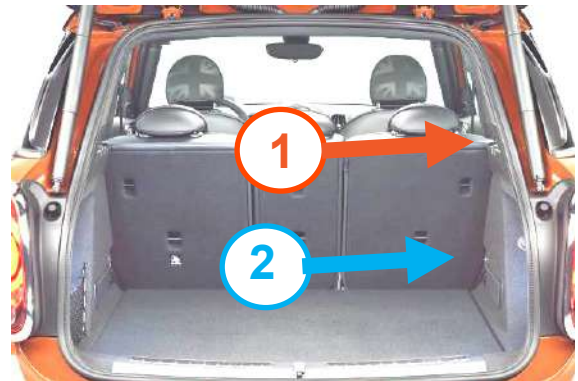
Large gap between parcel shelf locator and hook



Large gap between seats and D-Ring recess

✔ SH2  
AVAILABLE

Boot shape 2



No gap

No gap between parcel shelf locator and hook



No gap between seats and D-Ring recess



Next page



**NOTE**

If your vehicle is SH1  
the rear seat backs  
need to be in the fully  
reclined position



If your vehicle is SH2  
the rear seat backs  
need to be in this  
upright position

Distance between rear seat backs and  
rubber seal of the tailgate **490mm**,  
(taken at the top edge of the carpet)



## Question 2 - Vehicle Identification Guide



### NET

AVAILABLE

With storage net on  
boot side



### NETNO

AVAILABLE

No storage net on  
boot side



Next page





## Question 3 - Vehicle Identification Guide



### FRSD

AVAILABLE

#### Raised floor

The floor is flush with the recesses on both sides



*Access to the underfloor storage, will only be possible by removing the boot liner.*



### FOUT

AVAILABLE

#### False floor removed\*

False floor removed leaving a deeper floor



*\* 1. some models don't have a false floor, they permanently look like this.*

*\*2. if you do have a false floor and are ordering this version ensure you can remove **your** false floor before placing your order.*



Next page

