

PEUGEOT 5008 – 2017 to 2024

OUR REF: H0705

PACKAGING REQUIREMENTS.

BOOT LINER

- 2 x 450mm
 - 2 x 400mm
 - 2 x 340mm
 - 2 x 110mm
- } 30mm wide self-adhesive loop fastener
- 7 x tabs self-adhesive loop fastener
 - 2 x tabs ref. 117



TAILGATE COVER

- 18 x tabs self-adhesive loop fastener

Rear split, prepared for bumper flap and seat flap



VERY IMPORTANT PREPARATION



To ensure the self-adhesive hook & loop fastener stick to the plastic trim, you **MUST CLEAN** the plastic from grime and **REMOVE** all the **SILICONE** applied during manufacture and valeting.

To do this please:

1. Use a silicone remover, such as 'Auto-Glym Intensive Tar Remover' and apply generously to the surface you want to adhere to.
2. Using a separate clean & dry cloth, thoroughly dry the surface until the cloth starts to drag. Attach 1 self-adhesive fastener tab to see if it sticks. (Repeat step 1 to 2 if necessary) A couple of spares have been provided.
3. Attach the self-adhesive fasteners and let them fully adhere over the next 24 hours for the best bond.



**The self-adhesive fasteners cannot be used once it has been in contact with silicone. Replacement kits are available from our website.*

STEP 1. PREPARATIONS

- Slide seats as far back to the tailgate as possible and recline the seats to suit your preference. The boot liner will not fit if the seats are slide forwards (**right seat on Image A**)
- Remove the load cover. It may be replaced later. Put the headrests in their highest position. (**image A**)
- Hold the near side seatbelt vertical and stick two *self-adhesive tabs* on the bottom and two at the top of the plastic side as shown. (**Highlighted in pink Image B-left**)
- Attach the two *ref.117 tabs* to the previously attached self adhesive tabs trapping the seatbelt flush to the plastic side. (**Highlighted in blue Image B-right**)

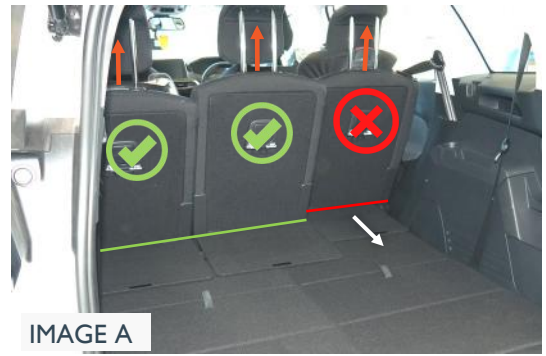


IMAGE A

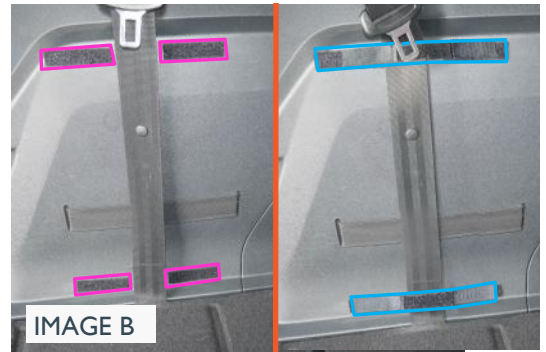


IMAGE B

STEP 2. FITTING THE BASE

- Place the boot liner into the car boot with the Hatchbag logo at the seat end. Flatten the base so it fits snugly against the edges. The hook fasteners welded to the reverse face fix directly to the carpet. (**image C**)



IMAGE C

STEP 3. FITTING THE FRONT

- - **PLUS / SPLIT VERSION ONLY** - fasten the hook & loop fasteners between the side panels and the seat panel. (**image D**)
- Starting with the middle headrest, fasten the hook & loop fastener straps around both headrest posts. (**image E**). Make sure to hold the front part of the base in position as not to pull the boot liner too far up. Repeat the procedure with the left and right headrests.



IMAGE D



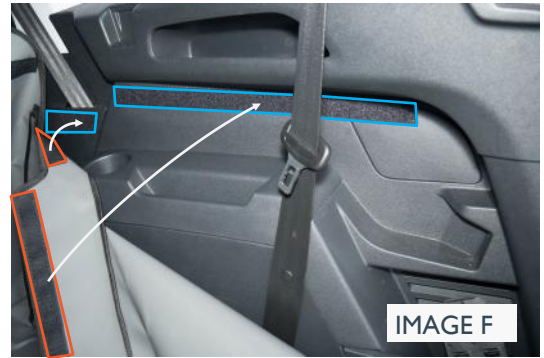
IMAGE E

REAR PLUS VERSIONS

You **MUST** unfasten the hook & loop fasteners + the headrest straps before you recline the rear seat uppers. (*Please refer to REAR PLUS / SPLIT options on website to see detailed photo*)

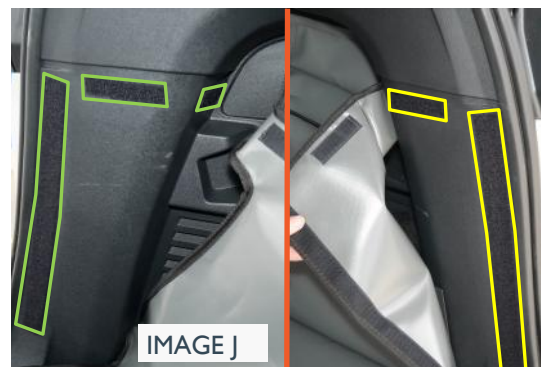
STEP 4. FITTING THE SIDES

- Stick the *110mm self-adhesive loop fastener* and the *450mm self-adhesive loop fastener* on the plastic sides in line with the hook fastener sewn on the back of the boot liner side (highlighted in blue-image F)
- Pass the seat belt through the slot (green arrows - image G & I) Fasten the hook fastener sewn onto the top edge of the boot liner side (orange arrow - images G & I) and onto the previously attached loop fastener along the boot side. (Image H)
- Repeat on nearside (image I)



STEP 5. FITTING THE BACK

- Stick two *self-adhesive loop fastener tabs* and one of the *400mm self-adhesive loop fastener strip* onto the plastic panel located at the tailgate end of the boot nearside and in line with the hook fastener sewn and welded onto the reverse side of the boot liner. (highlighted in green - image J)
- Repeat on off side with one *tab* and the other *400mm stripe* (highlighted in yellow - image J)
- Attach one *340mm self adhesive loop fastener strip* on each side of the tailgate lock in line with the hook fastener sewn on the rear end of the boot liner. (highlighted in blue - image K)
- Fasten the boot liner to them using the hook fastener sewn and welded on the reverse part of the boot liner.



OPTIONAL EXTRAS


Please note the following photos are non-specific to your vehicle

STEP 5A. SEAT FLAP

- The Seat flap is designed to protect the top of your rear seat giving additional protection from drooling dogs etc.
- The Seat Flap can also be used in conjunction with the **Rear Plus** or **Split** Option(s). With the rear seats in the folded position the Seat Flap extends the coverage forward. (image 3)
- Lower the headrests
- Attach the Seat Flap to the loop fastener strip that has been manufactured into the Boot liner just below the top of the rear seats. (image 1)
- The flap is then placed over the rear head rests and down the back of the passenger seats. (image 2)
- If the Seat Flap sits over large headrests and obstructs your rear view: carefully create openings in the flap to accommodate the headrest posts.



STEP 5B. TAILGATE COVER

-  Line up the tailgate cover with the tailgate and clean the areas where the self-adhesive loop fastener tabs will be stuck. (image 4)
- Use the self-adhesive loop fastener tabs to attach the cover to the plastic trim.



STEP 5C. BUMPER FLAP

- Fit boot liner
- Attach the Bumper Flap to the loop fastener strip that has been manufactured into the base of the boot liner. (image 5)
- The Bumper Flap either folds into the vehicle OR can be detached and stored elsewhere when you close the tailgate.



OPTIONAL EXTRAS page 2

Please note the following photos are non-specific to your vehicle

STEP 5D. FLOOR EXTENSION

The “Floor extension” offers superior protection to the rear seats when purchased in conjunction with a REAR PLUS option.(image 6)

- The Floor extension is designed to attach to a Rear Plus version liner.
- It offers additional protection to the back of the front seats and the extended floor area when the rear seats are folded flat.
- The max width is 148cm (see photo on left).
- It will offer no protection to the rear doors



The Seat Flap 5A, The Bumper Flap 5C & The Floor Extension 5D cannot be added at a late date

STEP 5E. FREQUENT USE KIT

- If you frequently remove/fit your boot liner from/to your vehicle please note that the carpet will “fluff” up – we have an alternative “Frequent Use Fitting Kit” (image 7+8)

The Frequent Use Kit is available to buy from our “on-line” Factory Shop – simply add it to your order from the Factory Shop. These can also be ordered at a later date.

