

Mercedes Benz GLE - 2019 Onwards

Our ref: H0852

FITTING KIT CONTENTS:

- BOOT LINER SH1
 - 2 x 480 mm 30mm wide self-adhesive loop fastener
 - 2 x 450 mm 30mm wide self-adhesive loop fastener
 - 2 x 365 mm 50mm wide self-adhesive loop fastener
 - 6 x Ref: 121 fastener tabs

- BOOT LINER SH2 & SH3
 - 2 x 790 mm 30mm wide self-adhesive loop fastener
 - 2 x 480 mm 30mm wide self-adhesive loop fastener
 - 6 x Ref: 121 fastener tabs

- BOOT LINER EXTENSION
 - 2 x tabs self-adhesive loop fastener

- TAILGATE COVER
 - 20 x tabs self-adhesive loop fastener



SH1 Rear Plus with Seat Split boot liner prepped for a seat flap, boot liner extension and bumper flap.



Ref:121



VERY IMPORTANT PREPARATION



To ensure the self-adhesive hook & loop fastener stick to the plastic trim, you **MUST CLEAN** all grime from the plastic and **REMOVE** all **SILICONE** applied during manufacture and valeting.

To do this please:

1. Use a silicone remover, such as AutoGlym Intensive Tar Remover, and apply generously to the surface you want to adhere to.
2. Using a separate clean, dry cloth, thoroughly dry the surface until the cloth starts to drag. Attach one self-adhesive fastener tab to see if it sticks. (Repeat steps 1 and 2 if necessary.) Extra tabs have been provided.
3. Attach the self-adhesive fasteners and let them fully adhere over the next 24 hours for the best bond.

**The self-adhesive fasteners cannot be used once they have been in contact with silicone. Replacement kits are available on our website.*



STEP 1. PREPARATIONS

- Remove the load cover. It may be replaced later.
- **SH1 ONLY** - Fold the 3rd row seats flat.
- Put the headrests on 2nd row seats in their highest position. (Image A)



STEP 2. FITTING BASE

- Place the boot liner in the car boot with the Hatchbag logo at the seat end. Flatten the base so it fits snugly against the edges. (Image B)
- Push the two foam-filled tabs sewn onto the front end of the base into the slot between the base and the 2nd row rear seats. Lifting the seats a little may open up the gap. Be sure to keep the base straight. Fold the seats back up trapping the foam tabs. (Image C)



STEP 3. FITTING THE FRONT

- **PLUS / SPLIT VERSION ONLY** - Fasten the hook & loop fasteners between the side panels and the seat panel. (Image D)
- Starting with the middle headrest, fasten the hook & loop fastener straps around both headrest posts. (Image E). Make sure to hold the front part of the base in position to avoid pulling the boot liner too far up. Repeat the procedure with the left and right headrests.

REAR PLUS VERSIONS

You **MUST** unfasten the hook & loop fasteners and the headrest straps before you recline the upper part of the rear seats. (Please refer to **REAR PLUS / SPLIT options on website to see detailed photo.**)



STEP 4. FITTING THE SIDES



- On both sides of the boot stick the following loop fasteners in line with the hook fasteners sewn & welded on the reverse side of the boot liner as highlighted on **Image F & G**

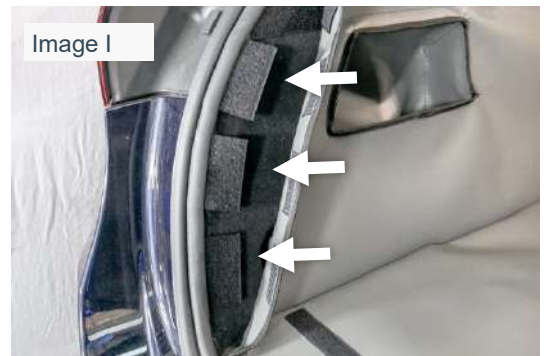
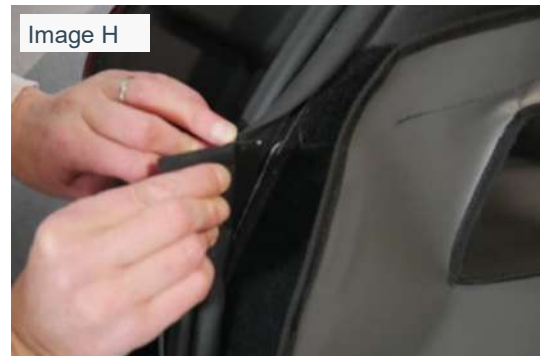
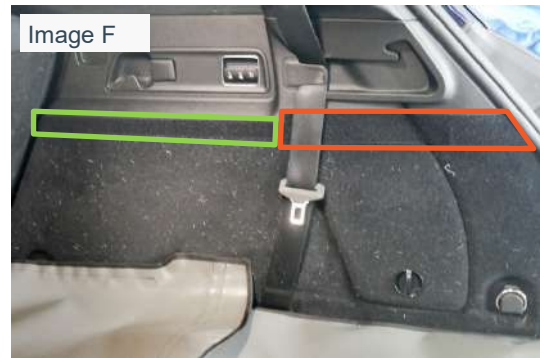
SH1 ONLY: (Image F)

- Green 450 mm 30mm wide loop fastener
- Orange 365 mm 50mm wide loop fastener

SH2/SH3 ONLY: (Image G)

- Blue 790 mm 30mm wide loop fastener

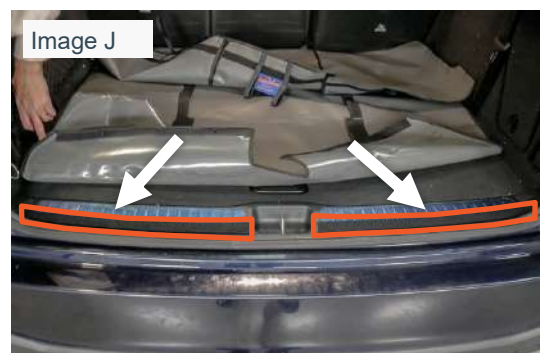
- Insert **3x** Ref:121 fastener tabs on each side of the tailgate end of the boot. To do this, peel back the rubber and slot the plastic end of the fastener tabs into the void behind the carpeted panel of the boot area (**Image H and I**)
- Slide these fastener tabs up or down so that they align with the hook fastener on the back of the boot liner.
- Fasten the hook fastener sewn onto the top and back edge on both sides of the boot liner directly onto the previously attached loop fasteners.



STEP 5. FITTING THE BACK



- Stick the **2 x 480 mm** to the panel located on either side of the lock at the tailgate end of the boot area. (**Orange, Image J**)
- Attach the boot liner to it using the hook fastener on the liner



OPTIONAL EXTRAS

Please note: not all of the photographs are specific to your vehicle.

STEP 6A. SEAT FLAP & TAILORED SEAT FLAP

- The Tailored Seat flap is designed to protect the top of your rear seat giving additional protection from drooling dogs etc. (Image 1)
- Lower the headrests
- Attach the Tailored Seat Flap to the loop fastener strip on the Boot liner just below the top of the rear seats. (Image 2)
- The Rectangular Seat Flap is designed **only** to be used in conjunction with the **Rear Plus/Split**. With the rear seats in the folded position this flap extends the coverage over the exposed section of the seat backs and the headrests. (Image 3)



STEP 6B. TAILGATE COVER

- Line up the tailgate cover with the tailgate and clean the areas where the self-adhesive loop fastener tabs will be stuck. (Image 4)



Use the self-adhesive loop fastener tabs to attach the cover to the plastic trim.



STEP 6C. BUMPER FLAP

- Install the boot liner
- Attach the Bumper Flap to the loop fastener strip located at the base of the boot liner. (Image 5)
- The Bumper Flap either folds into the vehicle OR can be detached and stored elsewhere when you close the tailgate.



OPTIONAL EXTRAS PAGE 2

Please note: not all of the photographs are specific to your vehicle.

STEP 6D. BOOTLINER EXTENSION

The Bootliner extension provides superior protection for the rear seats when purchased with a REAR PLUS option.

- The Bootliner extension is designed to attach to a Rear Plus/Split version liner.
- It provides additional protection for the back of the front seats and the extended floor area when the rear seats are folded flat.
- It does not offer full protection to the rear doors
- Attach the Bootliner extension to the main boot liner (Image 6)
- Fasten the two ties in the corner together (Orange arrows - Image 7)
- Fasten the hook & loop fastener straps around the headrest posts. (Blue arrows - Image 7)
- On both sides, attach 1 x fastener tab where the rear seat backs would lock into place, in line with the hook fastener tab welded onto the back of the boot liner extension sides. (Green arrow - Image 8)
- Attach the boot liner extension onto the previously attached loop fasteners.



Please Note: the Seat Flap, the Bumper Flap & the Bootliner Extension cannot be added at a later date.